

Moxi™ B-R Powered by Blu

Moxi B9-R, Moxi B7-R, Moxi B5-R, Moxi B3-R, Moxi B1-R

Lithium-ion receiver in canal (RIC) direct connectivity hearing instrument series



Moxi B-R

| Integra OS | | Blu 9 Premium | Blu 7 Advanced | Blu 5 Standard | Blu 3 Essential | Blu 1 Lower essential |
|---|----------------------------------|------------------|-------------------|-------------------|--------------------|--------------------------|
| Environmental classification | Total listening environments | 7 | 6 | 4 | 2 | AutoMic |
| | Noise | • | | | | |
| | Conversation in noise | • | • | | | |
| | Music | • | • | | | |
| | Quiet | • | • | • | | |
| | Conversation in a small group | • | • | • | | |
| | Conversation in a crowd | • | • | • | • | |
| | Conversation in quiet | • | • | • | • | |
| | Total streaming environments | 2 | 2 | 2 | 2 | 2 |
| | Media speech | • | • | • | • | • |
| Media music | • | • | • | • | • | |
| Sound optimization and performance | AutoFocus 360 | • | | | | |
| | AutoFocus | | • | | | |
| | Dynamic noise reduction | • | • | | | |
| | Soft speech lift | • | • | • | | |
| | Spatial Awareness | • | • | • | | |
| | Pinna Effect | • | • | • | • | • |
| | Speech enhancement | • | • | • | • | • |
| | Noise reduction | • | • | • | • | • |
| Hardware features | Tap control | • | • | • | • | • |
| | Made for all direct connectivity | • | • | • | • | • |
| | Rechargeable | • | • | • | • | • |
| Fine-tuning channels | 20 | 20 | 16 | 12 | 12 | |

Available in all technology levels

Sound stabilization

- › AntiShock 2
- › Wind control
- › Feedback manager
- › Natural Sound Balance

Ease and convenience

- › Remote Plus app
- › TV Connector
- › Remote Control
- › PartnerMic
- › RogerDirect
- › DuoLink
- › Binaural Phone*

Microphone options

- › Adaptive directional
- › Fixed directional
- › Fixed wide directional
- › Omni directional

Fitting

- › First fit workflow
- › Automatic Adaptation Manager
- › Frequency compression 2
- › Tinnitus masker
- › Manual programs
- › IntelliVent

Experience innovations

Performance tracking

- › FLEX:TRIAL
- › Log It All
- › Ratings
- › Usage

Continuous care

- › Coach
- › Remote adjust
- › FLEX:UPGRADE

Personalization

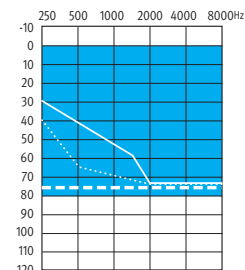
- › Equalizer
- › Clarity and comfort buttons
- › Optional app programs

Moxi B-R is rated IP 68

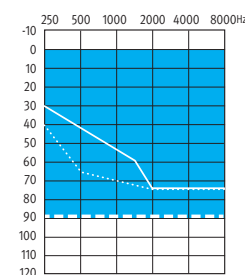
Not all technology levels are available in all markets.

*Not available for lower essential level products.

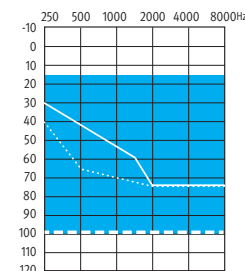
Fitting guides



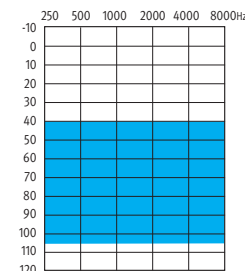
S receiver



M receiver



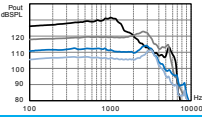
P receiver



UP receiver

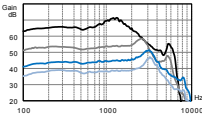
- Open dome/cap dome
- - - Vented dome
- ▬ Power dome or sleeve mold

ANSI 3.22 2014/IEC 60118-0: 2015 2cc coupler technical data



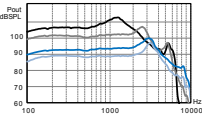
OSPL90

| | | | | |
|-----------------------|-----|-----|-----|-----|
| Maximum (dB SPL) | 111 | 114 | 122 | 132 |
| HFA - OSPL90 (dB SPL) | 106 | 111 | 120 | 124 |



Full on gain (input 50 dB SPL)

| | | | | |
|----------------|----|----|----|----|
| Maximum (dB) | 47 | 51 | 59 | 71 |
| HFA - FOG (dB) | 40 | 46 | 56 | 65 |



Reference test setting (RTS)

| | | | | |
|--|-----------------|-----------------|-----------------|-----------------|
| Frequency range (Hz) | <100 - 8000 | <100 - 8000 | <100 - 6300 | <100 - 6100 |
| Reference test gain (dB) | 29 | 34 | 43 | 47 |
| Typical battery life (h) * | 18 | 18 | 18 | 18 |
| Equivalent input noise at RTS (dB SPL) | 19 | 19 | 19 | 19 |
| Total harmonic distortion at 500 Hz/800 Hz/1600 Hz/3200 Hz (%) | 1.5/2.0/2.0/1.0 | 1.5/2.0/2.0/1.0 | 1.0/1.5/1.0/1.0 | 1.5/1.5/1.0/1.0 |

Legend

- Standard Power
- Moderate Power
- Power
- Ultra Power

Test conditions

Lithium-Ion rechargeable battery; Source: voltage 3.8 V
 * Typical operating time of the rechargeable battery is based upon a combination of bluetooth streaming and regular hearing instrument usage.
 The measurements obtained with a closed configuration using an HA-1 coupler (ANSI-3.7-1995).
 The hearing instrument set to Unitron TrueFit test settings. LLE is applied at an approximate level of 35 dB SPL.
 Domes should never be fit on patients with perforated eardrums, exposed middle ear cavities, or surgically altered ear canals. In the case of such a condition, we recommend use of a customized earmold.
 We reserve the right to change specification data without notice as improvements are introduced.

WARNING: This hearing instrument has an output sound pressure level that can exceed 132 dB SPL. Special care should be taken when fitting this instrument as there is a risk of impairing the residual hearing of the user.
 Changes or modifications to the hearing aid that are not explicitly approved by the manufacturer are not permitted. Such changes may damage the ear or the hearing aid.



Sonova AG
 Laubisrütistrasse 28
 CH-8712 Stäfa, Switzerland